

ECG Electrodes Belt w/handles

Model: ARh

Instructions for Use

Device Description

The **ECG Belt** is a system of ECG electrodes cast in a hyper-flexible silicone that is similar to the existing V1-V6 pre-cordial electrodes, LL, LA, RL and RA.

The **Belt**, including the conductors, is flexible and can be stretched to fit all body shapes and sizes, men and women alike; when fitted to the chest, it stretches to the required proportions, and the distance between the electrodes is automatically set.

The **Belt** can be connected to standard ECG with a suitable D-sub connector.

The limb electrodes include 2 arm electrodes and right leg electrode (GND) embedded in the belt, and a leadwire with a snap to be connected to a left leg electrode (clamp, disposable, etc.)

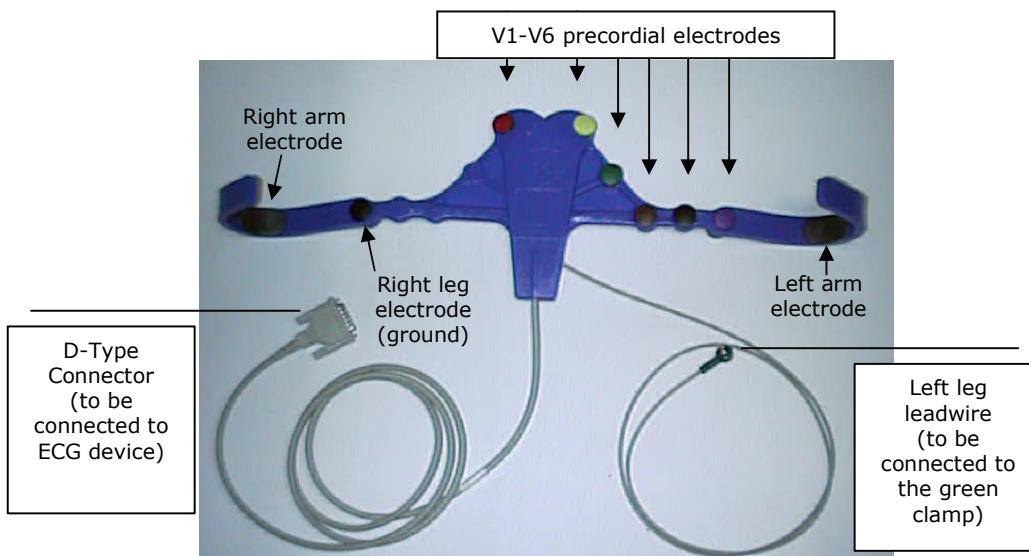


Figure 1: ECG Electrodes Belt Model ARh

General Instructions

1. Make sure that the ECG instrument you use is serviceable, and meets international safety standards.
2. Make sure you have a suitable connector for connecting the ECG instrument to the ECG Belt.
3. It is recommended to conduct the examination in a quiet surrounding.
4. The patient should lie comfortably on a flat surface during the examination. It is not recommended to conduct the examination in a sitting position.
5. The use of Electrode Contact Spray or gel is recommended. The examiner should wet the Belt electrodes or the electrode sites on the skin. If there is fatty cream on the skin, remove it with alcohol

CAUTION: Stay away from devices that create strong electromagnetic fields.

Conducting the Examination

1. Connect the cable to the ECG instrument. Make sure the connection is good.
2. Connect the stud plugs to the clamp (Left Leg).
3. Wet the skin with electrode gel, spray or water.
4. Arrange the Belt on the chest so that it is centered and stretched, with all the electrodes in contact with the skin. Remember - electrodes V1 and V2 should be positioned on both sides of the sternum at the 4th intercostal space. V6 must reach the mid-axillary line. The other electrodes will then be set in their places. The V1 and V2 electrodes may be bent towards the body if the patient has a sunken sternum. Right leg (ground) electrode is placed on the right side of the chest. Make sure the arm oval electrodes are in good contact with the patient's skin. See figure 2.
5. Arms should be positioned at the side of the body. The patient should not strain the arms muscles, the belt is kept in position by the weight of the relaxed arms. See figure 2.
6. Attach the LL clamp to the patient's left ankle. Connect the lead wire to the clamp's stud. See figure 2.
7. When the examination is complete, remove the belt.

It is important that the patient is relaxed and does not strain his/her muscles during the examination. The patient should try not to move or talk during the examination



Figure 2:
ECG Belt on patient

Cleaning

The Belt can be washed with water or disinfected with alcohol or chlorhexidin.

CAUTION: Do not use disinfectants containing petrol.

Technical Data

Material	Silicone rubber
Length	50 cm, expandable to 80 cm
Conductors	Copper, resistance under 1 ohm/meter
Electrodes	Ag/AgCl coated
Standards	FDA 510(k) No.K982470, ISO 9001, ISO 13485 CE marking under the MDD 93/42EEC

Manufacturer

TapuzMedical Ltd. Tel: +972 77 2099306 Email: info@tapuzmedical.com
41 Ilanot St. Gat Rimon Israel 49920 Fax: +972 77 2099305 Web: www. tapuzmedical.com



Authorized Representative in the EU

TapuzMedical Limited Canary Wharf, London E14 9TS
44 Skylines, Limeharbour United Kingdom

UM ARh En 0109 rev 1.2