

ECG Electrodes Belt w/handles

Model: Universal 6Uh **Cat. No.** 11001

Instructions for Use

Device Description

The ECG Belt universal model is a system of ECG electrodes cast in a hyper-flexible silicone that is similar to the existing V₁-V₆ pre-cordial electrodes.

The Belt, including the conductors, is flexible and can be stretched to fit all body shapes and sizes, men and women alike; when fitted to the chest, it stretches to the required proportions, and the distance between the electrodes is automatically set.

The Belt can be connected to every standard ECG patient cable.

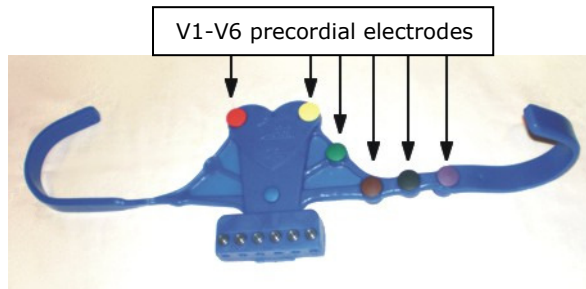


Figure 1: ECG belt universal model

General Instructions

1. Make sure that the ECG instrument you use is serviceable, and meets international safety standards.
2. Try to conduct the examination in quiet surroundings.

CAUTION: Stay away from devices that create strong electromagnetic fields.

3. The patient should lie comfortably on a flat surface during the examination. It is not recommended to conduct the examination in a sitting position.
4. The use of electrode contact spray or gel is recommended, although water is usually sufficient. The skin, which comes in contact with the electrodes (i.e., the chest under the six pre-cordial electrodes), should be moistened during the examination. If there is fatty cream on the skin, remove it with alcohol.

Conducting the Examination

1. Connect the patient cable to the ECG instrument. Plug the other side of the cable to the fitting V₁ – V₆ sockets in the Belt accordingly and secure the screws.
2. Apply electrode gel ,spray or water on the skin. (See para. 4 in General Instructions).
3. Arms should be positioned at the side of the body.
4. Arrange the Belt on the chest so that it is centered and stretched, with all the electrodes in contact with the skin. Remember - electrodes V1 and V2 should be positioned on both sides of the sternum at the 4th intercostal space. V6 must reach the mid-axillary line. The other electrodes will then be set in their places.
V1 and V2 electrodes may be bent towards the body if the patient has a sunken sternum.

5. Fit the right handle of the Belt on the right arm and the left handle on the left arm (the arms should be naked). The handles should be placed over the mid-shaft of the humerus, between the elbow and the shoulder. The arms' weight holds the handles in place.
6. Attach the limb electrodes to the wrists and legs in the usual manner.
7. Activate the ECG instrument and conduct the examination.
8. When the examination has been completed, remove the Belt and the limb electrodes.

It is important that the patient is relaxed and does not strain his/her muscles during the examination. The patient should try not to move or talk during the examination.



Figure 2: ECG Belt on patient

Cleaning

The Belt can be washed with water or disinfected with alcohol or chlorhexidin.

CAUTION: Do not use disinfectants containing petrol.

Technical Data

Material	Silicone rubber
Length	50 cm, expandable to 80 cm
Conductors	Copper, resistance under 1 ohm/meter
Electrodes	Ag/AgCl coating
Standards	FDA 510(k) No.K982470, ISO 9001, ISO 13485 CE marking under the MDD 93/42EEC

Manufacturer

TapuzMedical Ltd.
41 Ilanot St. Gat Rimon Israel 49920
Tel: +972 77 2099306
Fax: +972 77 2099305
Email: info@tapuzmedical.com
Web: www.tapuzmedical.com

